

# EC Series

## Emulsion Cracking Systems

Pan America Environmental EC Series **Emulsion Cracking** treatment systems are self-contained, compact, low profile, packaged treatment systems designed to chemically and physically remove mechanical and chemically induced oil-in-water emulsions. The EC design flexibility allows the use of many different chemical combinations as predetermined through bench testing.

Our ECs incorporate best available, industrial grade technologies, components and controls tailored to meet your requirements. The EC consists of chemical metering, pre/post pH adjustment, chemical reaction/mixing chambers and oil/water separation. The EC can be combined with other down stream processes as required to complete the system per project demands and customer desires.

### Features

- ◆ Oil/water separator
- ◆ Chemical metering pumps
- ◆ Reaction chambers & mixers
- ◆ Forkliftable design
- ◆ Solids V-hopper
- ◆ Nema 4 control panel
- ◆ pH controllers
- ◆ Integral oil skimmer
- ◆ Chemical makeup system
- ◆ Flopak coalescing media
- ◆ Compact low profile design
- ◆ Internal/external epoxy coatings

### Options (partial)

- ◆ Influent/effluent/oil/sludge pumping systems
- ◆ Elevated design
- ◆ Retpak secondary coalescer
- ◆ Hi-temp upgrade
- ◆ Stainless construction
- ◆ Oil sight glass
- ◆ Walkway/platform
- ◆ Filter systems

### Applications

- ◆ Groundwater remediation
- ◆ Compressor condensate
- ◆ Industrial process water
- ◆ Machining coolant oil removal
- ◆ Vehicle washwater treatment
- ◆ Tank truck wash racks
- ◆ Bilge/ballast water treatment
- ◆ Plating waste



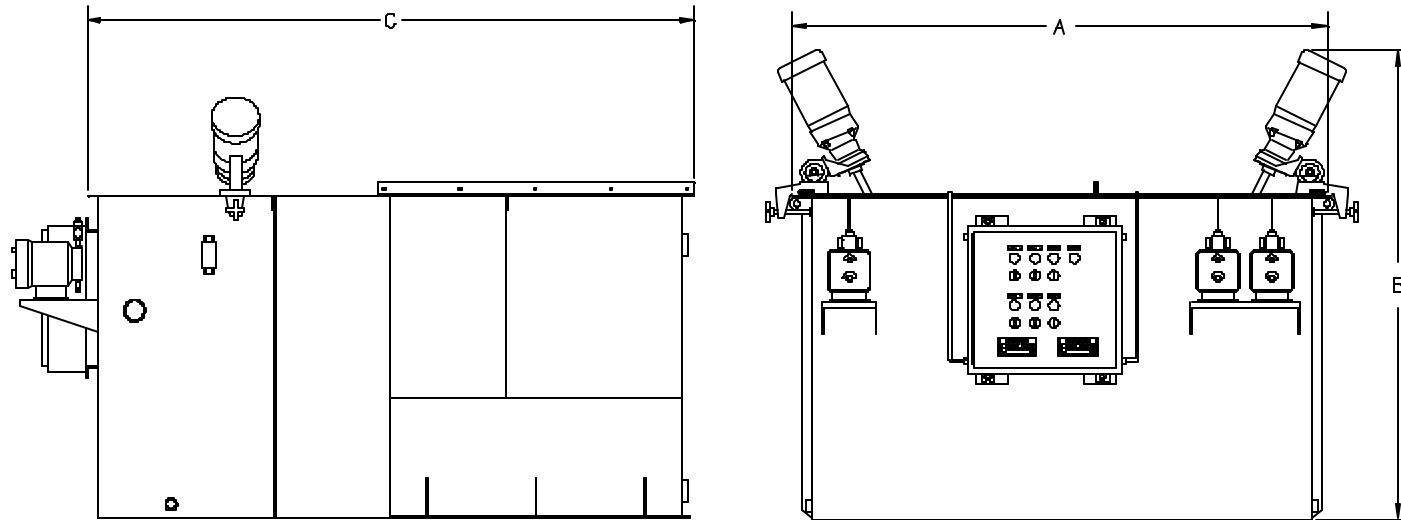
Flow Range 1-200 GPM

Pan America  
Environmental



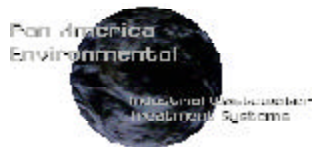
950 N. Rand Rd., Ste 120 Wauconda, IL 60084 USA  
847-487-9166 Fax: 847-487-9218 panam@panamenv.com  
<http://www.panamenv.com>

## EC Series Emulsion Cracking Systems



Model	Dimensions			Weights(lbs)		Flow GPM
	A	B	C	Empty	Operating	
<b>EC-4</b>	5'-11"	3'-10"	4'-4"	1700	3965	1 - 8
<b>EC-8</b>	5'-11"	4'-6"	4'-4"	2425	7900	8 - 16
<b>EC-12</b>	6'-7"	4'-6"	6'-4"	2910	9050	16 - 25
<b>EC-16</b>	6'-7"	5'-6"	8'-4"	3454	11600	25 - 35
<b>EC-24</b>	7'-10"	6'-10"	8'-4"	4800	18000	35 - 50
<b>EC-36</b>	8'-4"	8'-0"	8'-4"	6250	25000	50 - 70
<b>EC-48</b>	11'-4"	10'-0"	9'-4"	8300	30500	70 - 100

Information not for construction Design & dimensions may change without notice Flow rates are nominal



950 N. Rand Rd., Ste 120 Wauconda, IL 60084 USA 847-487-9166 Fax: 847-487-9218  
 panam@panamenv.com <http://www.panamenv.com>